

KONSTANTSPANNUNGS- LED-DRIVER



Charakteristika:

1. Universaler Eingangsspannungsbereich
2. Konstante Ausgangsspannung
3. Nominale Lebensdauer bis zu 50.000 h @ Ta 40 °C
4. 3 Jahre Garantie
5. Erfüllt Klasse C von Minimal- bis Maximallastbereich gemäß EN 61000-3-2
6. Hohe Effizienz
7. Geringe Verlustleistung
8. Übertemperatur- und Überlastschutz
9. Kurzschlussabschaltung mit automatischem Neustart
10. Schutzklasse II, SELV
11. Schutzart IP20
12. T-PWM digitale Dimmtechnologie von 0,1 – 100% flickerfrei



DALI-36-12-F1P1 / DALI-36-24-F1P1

Dimming Interface	2 in 1, DALI, Push DIM
Dimming Range	0% – 100% Dimming Depth 0,1%
Input Voltage, AC	100 – 240 V ±10%
Output Voltage	12 V / 24 V
Output Power	36 W



DALI-75-12-F1M1 / DALI-75-24-F1M1

Dimming Interface	2 in 1, DALI, Push DIM
Dimming Range	0% – 100% Dimming Depth 0,1%
Input Voltage, AC	100 – 240 V ±10%
Output Voltage	12 V / 24 V
Output Power	75 W



TD-36-12-E1P1 / TD-36-24-E1P1

Dimming Interface	3 in 1, TRIAC, ELV, PUSH DIM
Dimming Range	0% – 100% Dimming Depth: max. 0,1%
Input Voltage, AC	200 – 240 V
Output Voltage	12 V / 24 V
Output Power	36 W



3 Jahre Garantie
CE, RoHS



TD-50-12-E1D1

Dimming Interface	3 in 1, TRIAC, ELV, PUSH DIM
Dimming Range	0% – 100% Dimming Depth: max. 0,1%
Input Voltage, AC	200 – 240 V
Output Voltage	12 V
Output Power	50 W



TD-75-12-E1M1 / TD-75-24-E1M1

Dimming Interface	3 in 1, TRIAC, ELV, PUSH DIM
Dimming Range	0% – 100% Dimming Depth: max. 0,1%
Input Voltage, AC	200 – 240 V
Output Voltage	12 V / 24 V
Output Power	75 W



TD-150-24-E1M1

Dimming Interface	3 in 1, TRIAC, ELV, PUSH DIM
Dimming Range	0% – 100% Dimming Depth: max. 0,1%
Input Voltage, AC	200 – 240 V
Output Voltage	24 V
Output Power	150 W



3 Jahre Garantie
CE, RoHS



LM-75-12-U2D2 / LM-75-24-U2D2 / LM-100-24-U2D2

Dimming interface	DALI (IEC62386), Push Dim
Dimming range	0 – 100%
Input Voltage AC	100 – 277 V
Output Voltage DC	12 V / 24 V
Output Power	75 W or 100 W



LM-75-12-G2A2 / LM-75-24-G2A2 / LM-100-24-G2A2

Dimming interface	0/1 – 10 V, Push Dim / CCT adjustment
Dimming range	0 – 100%
Input Voltage AC	100 – 277 V
Output Voltage DC	12 V / 24 V
Output Power	75 W or 100 W



LM-75-12-G1A2 / LM-75-24-G1A2 / LM-100-24-G1A2

Dimming interface	0/1 – 10 V, 10 V PWM, Push Dim
Dimming range	0 – 100%
Input Voltage AC	100 – 277 V
Output Voltage DC	12 V / 24 V
Output Power	75 W or 100 W

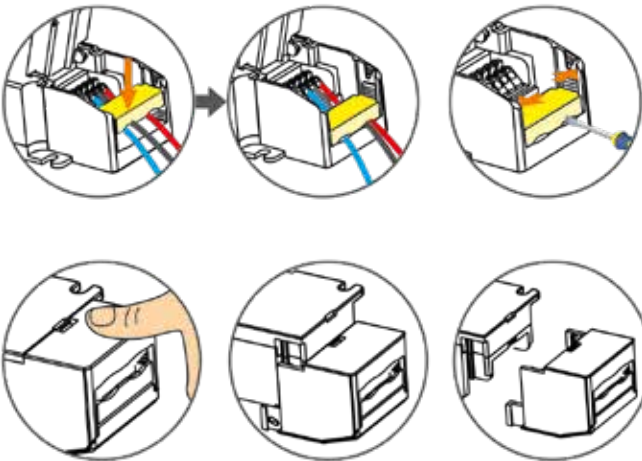


3 Jahre Garantie
CE, RoHS



LM-75 / 100 / 150 -G2D2

Dimming interface	DALI T8 (IEC62386), Push Dim / CCT adjustment
Dimming range	0 – 100%
Input Voltage AC	100 – 277 V
Output Voltage DC	12 V / 24 V
Output Power	75 W or 100 W or 150 W



3 Jahre Garantie
CE, RoHS